



MONTHLY MEMBERSHIP PROGRESS REPORT

District 33 A

Results as of: 04/30/2018

GMT: MAHESH CHITNIS

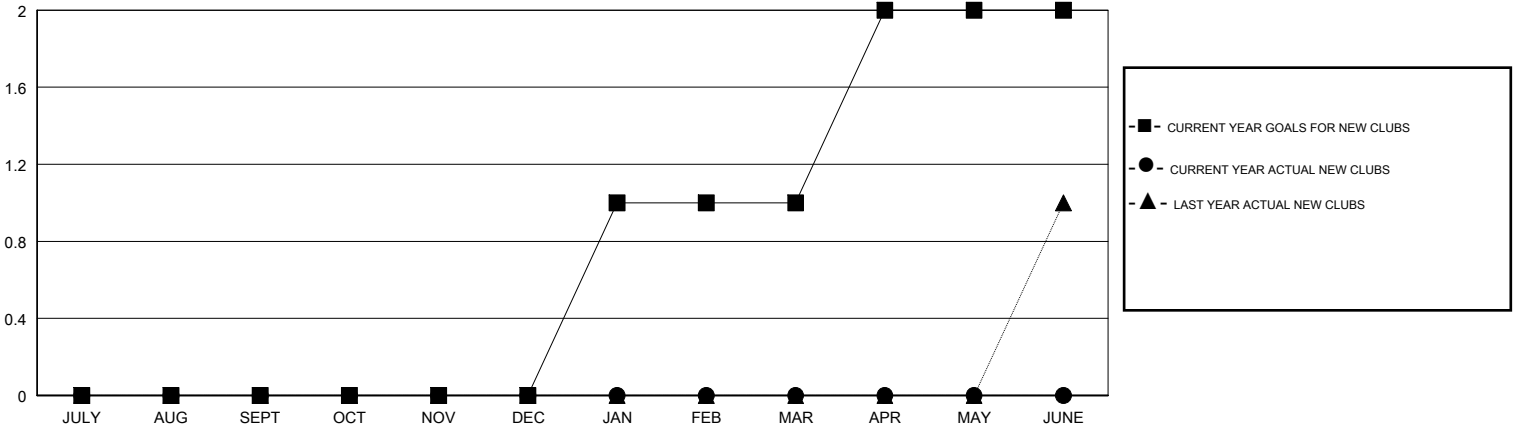
LOCATION MASSACHUSETTS

GMT CA

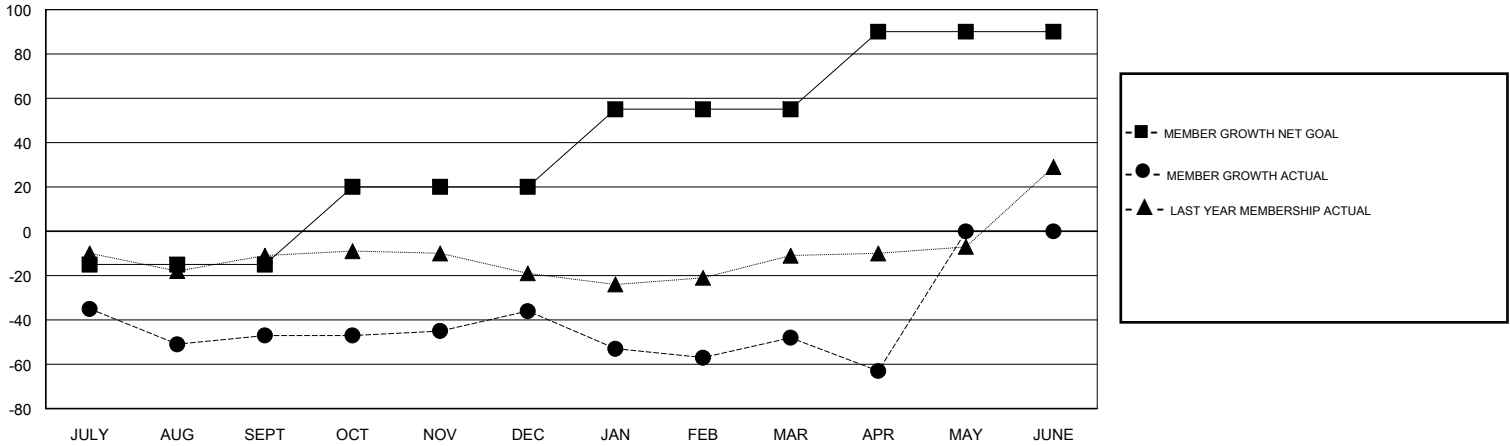
Clubs			
RESULTS FOR 2017-2018			
QUARTER	NEW CLUB GOAL	NEW CLUBS	DROPPED CLUBS
JULY/AUG/SEPT	0	0	0
OCT/NOV/DEC	0	0	0
JAN/FEB/MAR	1	0	0
APR/MAY/JUNE	1	0	0

Members			
RESULTS FOR 2017-2018			
QUARTER	MEMBER GROWTH NET GOAL	MEMBER GROWTH ACTUAL	DROPPED MEMBERS ACTUAL (including transfers)
JULY/AUG/SEPT	-15	28	69
OCT/NOV/DEC	35	29	18
JAN/FEB/MAR	35	21	31
APR/MAY/JUNE	35	12	26

GOALS AND ACTUAL NEW CLUBS CUMULATIVE



GOALS AND ACTUAL MEMBERS CUMULATIVE



DROPPED CLUBS: 0	28 CLUBS OF 49 ADDED 1 OR MORE NEW MEMBERS	<u>GENDER DISTRIBUTION</u>	
		MALE	977 (67.99%)
		FEMALE	460 (32.01%)
DROPPED MEMBERS		Women Percentage Fiscal Year Goal: 35%	
DECEASED	19	TOTAL FAMILY UNIT MEMBERS	303
CLUB CANCELLED	0	CLICK HERE FOR CUMULATIVE MEMBERSHIP DATA	
OTHER	125	FAMILY MEMBERS PAYING HALF DUES	158
TOTAL	144		